

# PIG IRON RENTALS RATE SHEET



\*NOTE: We require 48 hours notice to confirm ALL rentals.

## Studio A (Ground floor)

Rehearsal/Performance/Class, etc (w/o food)

Hourly: \$50

Daily: \$225

Weekly: \$1200

Public/Commercial (with food)

Hourly: \$125

Daily: \$1500



- 1596 sq. ft. (42' x 38') with 13.5' ceilings
- Track lighting
- White walls
- Wooden floor (not sprung)
- Private kitchenette with microwave, mini fridge, dishwasher
- Audience access directly from street OR through parking lot

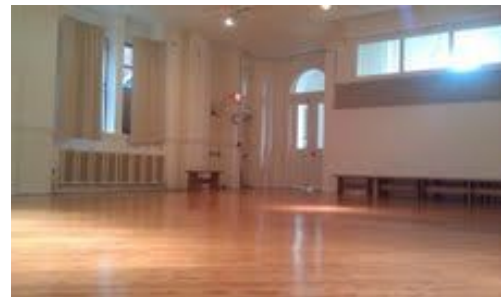
---

## STUDIO B (Ground floor)

Hourly: \$20

Daily: \$150

Weekly: \$750



- 1280 sq. ft (40' x 32') with 13.5' ceiling
- Acoustic baffling
- White Walls
- Wood floor (not sprung)
- Audience access through parking lot
- basic lighting and light board

---

## STUDIO C (Basement)

Hourly: \$10

Daily: \$75

Weekly: \$375



- 840 sq. ft. (40' x 21')
- Acoustic baffling
- Rubber flooring over tile

---

## CANCELLATIONS:

Cancellations for rentals that are four (4) days or fewer must be submitted at least 48 hours in advance or the deposit amount is forfeited. Cancellations for rentals that are five (5) days or greater must be submitted at least one week in advance or the deposit is forfeited.

For more information, please visit <https://www.pigiron.org/about-us/rentals>

To book a rental, please contact [rentals@pigiron.org](mailto:rentals@pigiron.org)